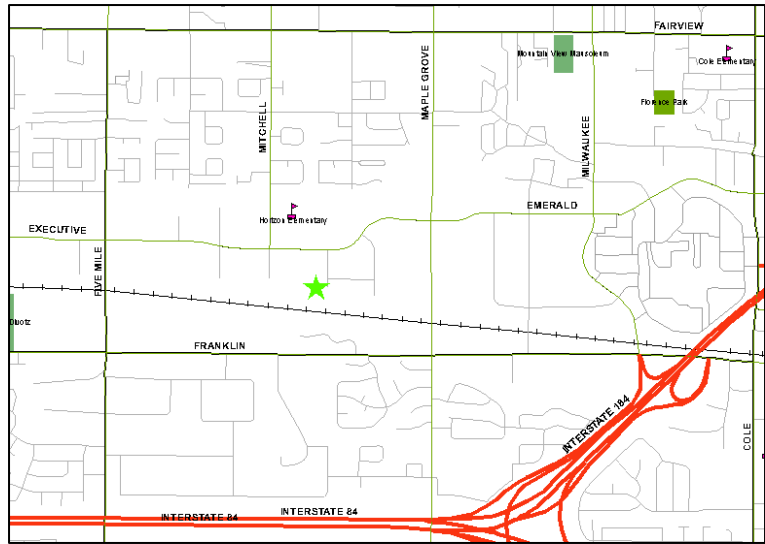


Southwest Idaho GIS User Group Boise, Idaho

Tuesday
February 5, 2008
9:00 AM – 3:00 PM
333 N. Sailfish Pl.
*Future home of
Boise City Hall West*



- | | |
|---------------|--|
| 8:30 – 9:00 | Registration |
| 9:00 – 9:30 | Welcome: Eric Wing
Greeting from Gail Ewart – Idaho Geospatial Information Officer
User Group Updates
Tina Fenske - Ada County Special Interest Group (SIG)
Angie Hopf – Canyon County Spatial Data Consortium (SDC) |
| 9:30 – 10:30 | James Pardue - TerraGo Technologies – Presentation on GeoPDF Solutions |
| 10:30 – 10:45 | Break |
| 10:45 – 11:15 | Dixie Booker-Lair – Idaho Dept. of Lands – Agency use of GeoPDF |
| 11:15 – 11:45 | Eddie Goldsmith – 911 Commission |
| 11:45 – 1:15 | Lunch |
| 1:15 – 1:30 | Scott Van Hoff – USGS – Update |
| 1:30 – 2:15 | Kevin Hyde – USFS – Fire Modeling |
| 2:15 – 2:30 | Break |
| 2:30 – 3:00 | Panel Discussion – Why should local governments participate on state and federal programs?
Panelists: Gail Ewart, Kevin Hyde, Scott Van Hoff |
| 3:00 – 3:30 | Matt Barney – Spatial Dynamics – Trout Unlimited Project |
| 3:30 – 4:00 | Rachel Holford – Boise City Police – Crime Analysis and GIS |

GIS users are welcome to attend the first SWIG meeting of 2008. Admittance is free and there will be plenty of free parking available.

Lunch Registration:

Lunch will be provided by Blimpies at a cost of \$6.00. If you are interested in registering for lunch contact April Wing to receive a registration form at awing@cityofboise.org or phone 395-7825. You are welcome to bring your own accommodations or there are a variety of restaurants in the neighboring commercial district. The lunch registration deadline is 5:00 P.M. January 31st. Lunch money will be collected at registration where you will receive a voucher.